



# Child Crisis Arizona Early Head Start

PHOENIX • MESA

ANNUAL REPORT  
2019



**Child Crisis Arizona**  
*Safe kids. Strong families.*



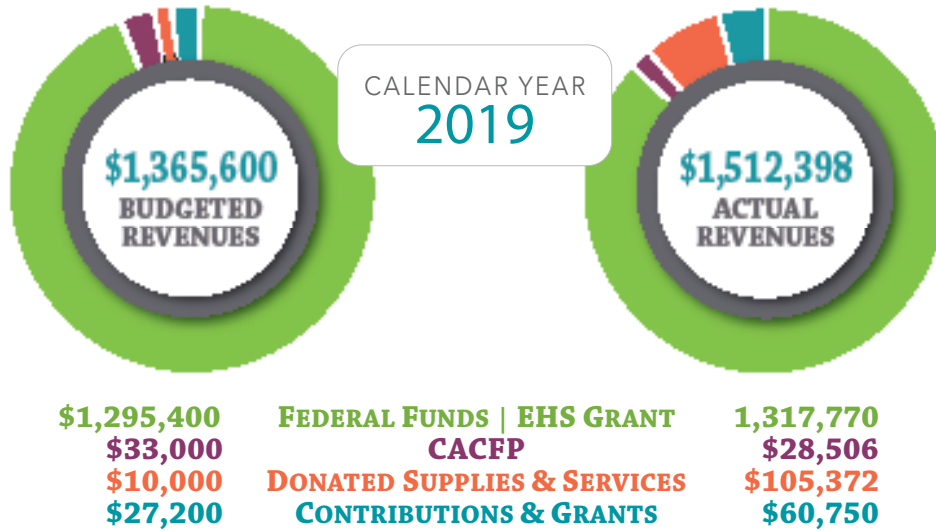
## Child Crisis Arizona's Early Head Start program

Child Crisis Arizona's Early Head Start programs served 271 infants, toddlers and pregnant women in 2019. Children receive a myriad of opportunities to develop the physical, social and emotional skills they will need to succeed in school. The program also has Family Support Specialists who work with families through prenatal, home-based and center-based visits that help build strong home and classroom connections.

# budget | expenditures | audit results

PHOENIX

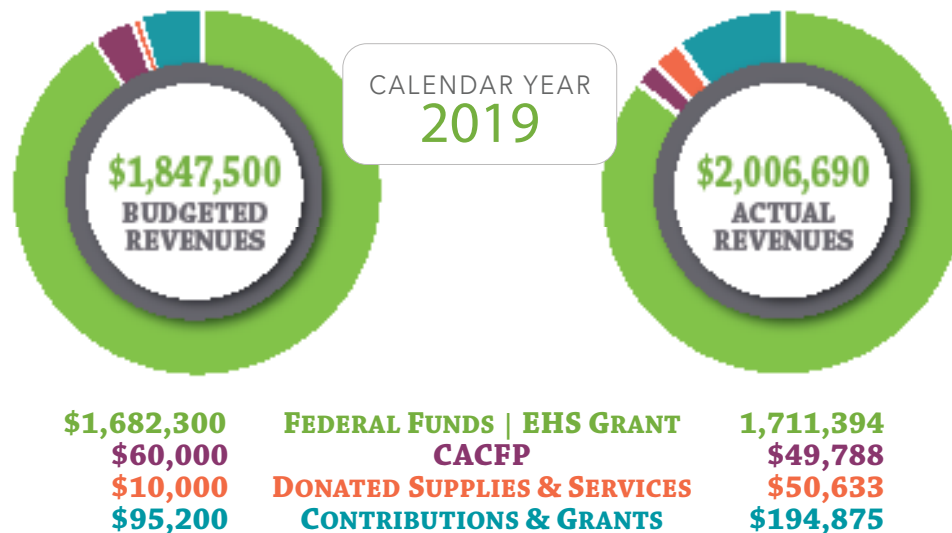
The majority of budgeted expenditures for the Early Head Start program are primarily for salaries and benefits of program staff. Personnel expenses were budgeted at \$825,500 and fringe benefits were budgeted at \$244,500. These items combined equal 83% of the budget. Other budgeted line items total \$225,400 and include supplies, contractual expenses, travel, and other expenses.



The Early Head Start program was part of the Child Crisis Arizona single audit for federal funds for the year ended December 31, 2019. The audit was conducted by the independent accounting firm of Henry+Horne. No material weaknesses or significant deficiencies were identified in the auditors' report on internal control over major programs. The auditors' report issued on compliance for major programs was unqualified. No audit findings or questioned costs were reported. Our most recent federal review was conducted by the Office of Head Start in October 2018. There were no findings during the review.

MESA

Budgeted expenditures for the Early Head Start program are primarily for salaries and benefits of program staff. Personnel expenses were budgeted at \$1,264,350 and fringe benefits were budgeted at \$380,138. These items combined equal 98% of the budget. Other budgeted line items total \$37,812 and include travel and other expenses.



# enrollment | healthcare

## PHOENIX

In 2019 we served a total of 105 children and pregnant women from 85 families and had an average monthly enrollment of 100% of our funded slots. We served 4% of the eligible zero to three population in our service area which includes zip codes 85006, 85008, 85016, 85018, and 85034.

53%

CHILDREN RECEIVED A MEDICAL EXAM DURING THE YEAR

17%

CHILDREN RECEIVED A DENTAL EXAM DURING THE YEAR

## MESA

In 2019 we served a total of 166 children and pregnant women from 140 families and had an average monthly enrollment of 100% of our funded slots. We served 3% of the eligible zero to three population in Mesa.

63%

CHILDREN RECEIVED A MEDICAL EXAM DURING THE YEAR

13%

CHILDREN RECEIVED A DENTAL EXAM DURING THE YEAR

# family engagement

In 2019, the following areas of family engagement in the Early Head Start programs saw growth:

80% of parents reported increased knowledge of community resources

8.7% growth in adult health, meaning families are reporting to have affordable and consistent medical care.

15.1% growth reported on family assessments of parents engaged and knowledgeable of resources

97% of parents who completed our program survey reported increased knowledge of their child's development

98% of parents who completed our program survey reported to have increased their engagement in setting education goals for their child

132 family goals were set in relation to supporting children's skills around school readiness

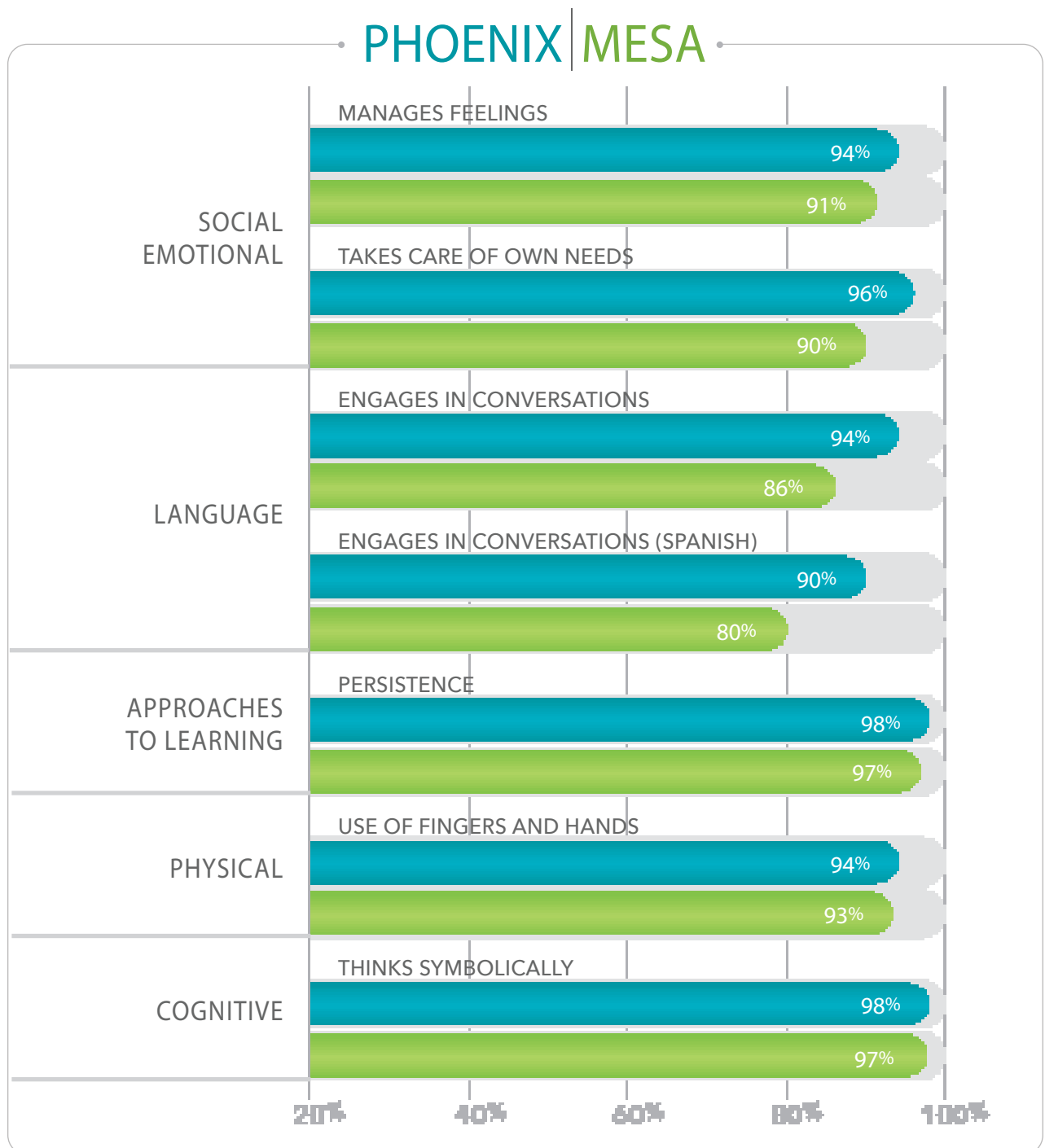
26.1% of families are engaged in their child's school readiness goals and assessments

## Family Engagement Activities and Workshops offered in 2019 included:

- Nutrition
- Father Engagement Workshops
- Mental Health
- Dental Health
- Opioid Substance Abuse Prevention
- Navigating Arizona's Early Intervention System (AzEIP)
- Literacy
- Meal Planning
- Home Décor
- Car Repair
- Prevention of Lead Poisoning
- Paper flowers
- Home Safety
- Preventing Child Abuse and Neglect
- Immigration
- Budgeting
- Making Hair Clips & Bows
- Curriculum Night
- Domestic Violence
- Conscious Discipline
- Annual Week of the Young Child Family Breakfast

# school readiness

Throughout the 2019 year, we focused professional development efforts on further implementing Conscious Discipline in our program. Teachers and Home Visitors improved skills in supporting children and parents in managing the strong feelings that often come with being a toddler, and which are especially evident in toddlers who have experienced trauma. By improving teacher, Home Visitor and parent skills in Conscious Discipline, children have more support to work through conflicts and frustrations and persist in all activities, thereby furthering their learning in all areas. We also focused training and coaching on teaching practices that support language development. In Fall of 2019 teacher assessments, scores in "Language Modeling", were in the high range in all classrooms. In correlation, we ended the year with our highest percentage ever of children meeting expectations for their age in language skills!



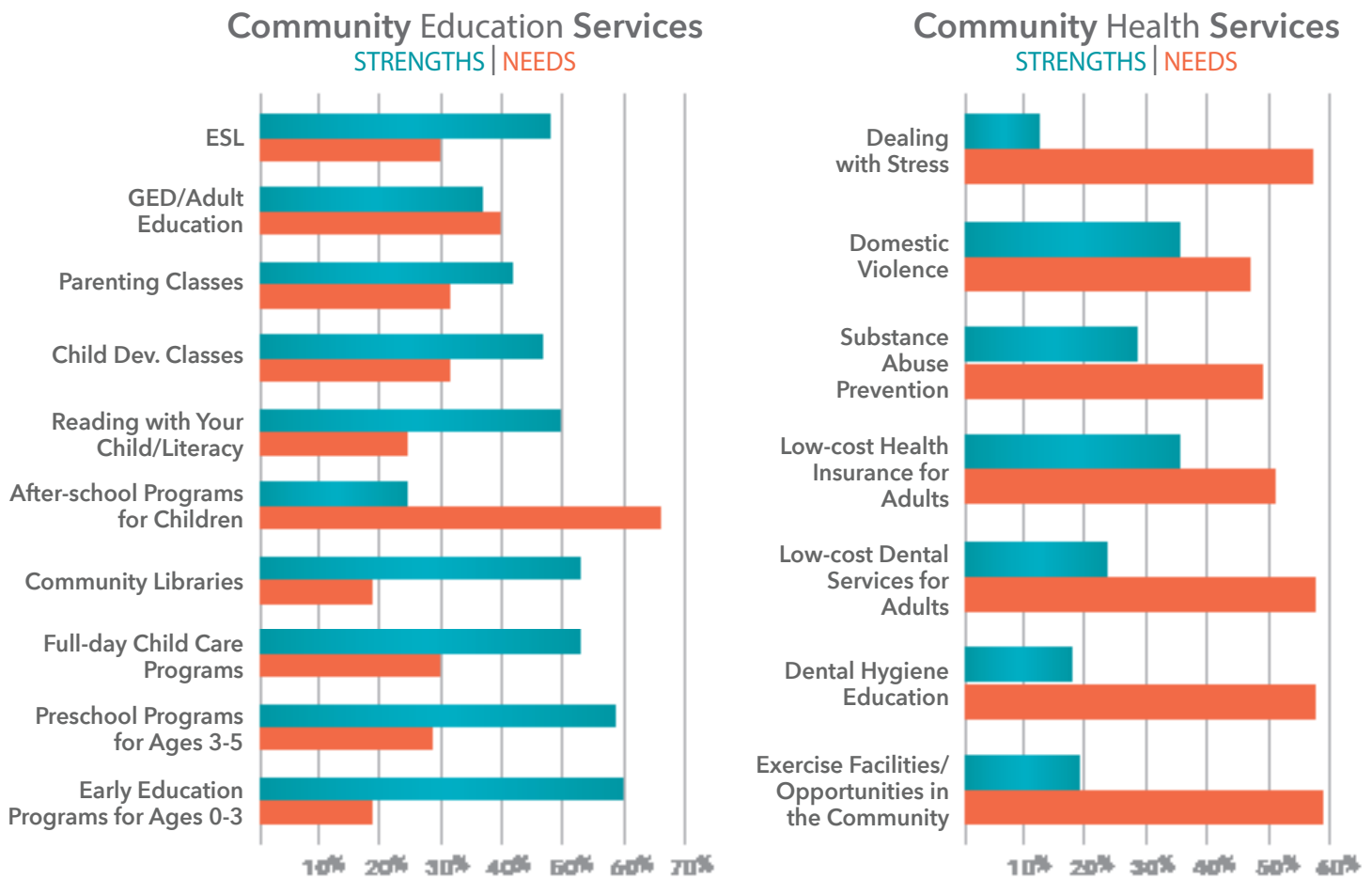
■ % OF PHOENIX CHILDREN MEETING EXPECTATIONS AT END OF YEAR   ■ % OF MESA CHILDREN MEETING EXPECTATIONS AT END OF YEAR

# 2019 Community Needs Assessment

Child Crisis Arizona surveyed parents in Mesa and Phoenix to ask about strengths and needs in their community. Strengths are topics parents felt they had the resources to address while needs are areas they felt they could use more assistance in. The following is a summary of their responses:

## PHOENIX

**80%** of families reported that their knowledge of community resources has increased since enrolling in our program.



### New services parents noticed in the community this year:

- Mobile Pantry at Maricopa County Hospital
- Wilson Family Resource Center now has free Zumba classes at 4:00 pm
- New food banks
- Parenting classes
- More dental, medical and legal services
- Creciendo Unidos has a new resource center for men

### Parents reported services recently closed:

- Several agencies that provided assistance in completing AHCCCS applications no longer provide this service.

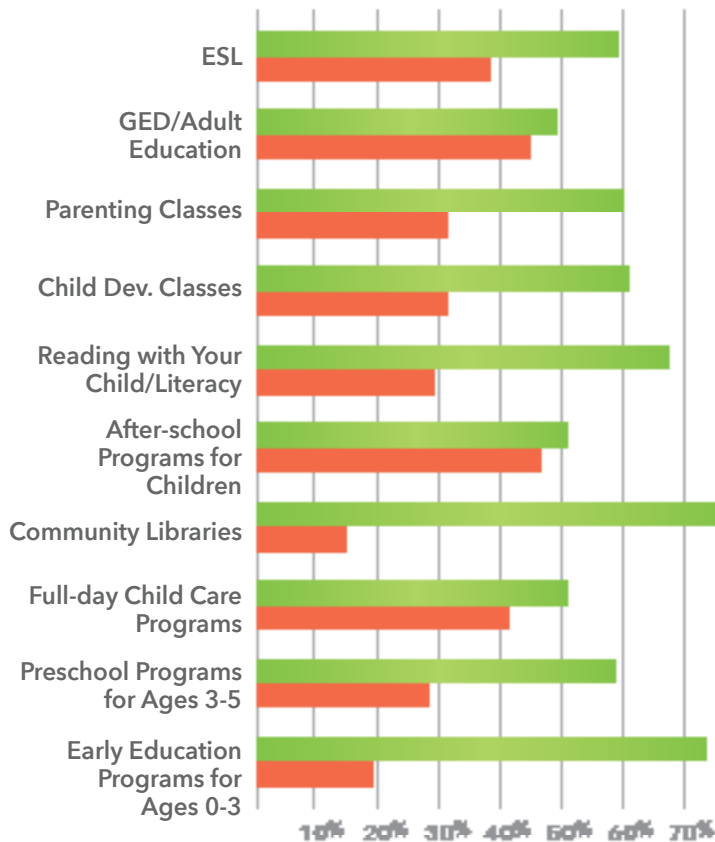
### Major changes in the community include:

- Fixing of roads
- More traffic lights have been added
- Many of the bus stops now have benches
- Bicycle rentals
- New Family Resource Center at Papago School District.

**86%** of families reported that their knowledge of community resources has increased since enrolling in our program.

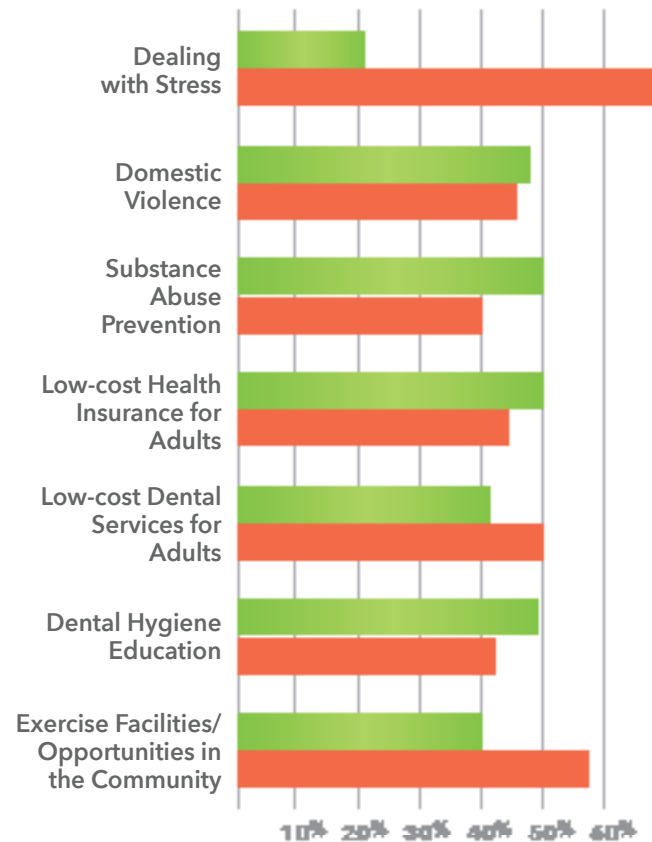
## Community Education Services

STRENGTHS | NEEDS



## Community Health Services

STRENGTHS | NEEDS



### New services parents noticed in the community this year:

- New community parks
- Remodeling of existing community parks such as Kleinman Park and Escobedo Park
- New preschools and daycares
- Transportation is being improved
- Libraries are increasing their educational activities

### Parents reported services recently closed:

- Section 8 Housing has closed in Mesa and is not accepting new applications
- United Food Bank at Javelina

### Major changes in the community include:

- Updates to the light rail
- Fixing of roads- lots of construction and detours.
- An increase in public family events



"I believe that  
investing in our children's development  
from the earliest age is the  
**single most important contribution we can make...**"

~UNKNOWN



**Child Crisis Arizona**  
*Safe kids. Strong families.*

FOR MORE INFORMATION PLEASE VISIT

[childcrisisaz.org](http://childcrisisaz.org)  
OR CALL 602.889.6165